

Voice

I Hear You

Charlotte Harding

♩ = 100 With vitality

INTRO

7

mf VERSE 1



I hear the crys-tal wa-ters,



bu-bble, ebb and flow,

ro-lling from the fjords to the sea.

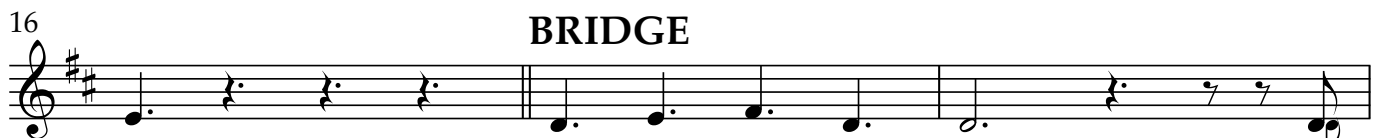
The



whis-pers of the tun-dra,

the wild winds that blow,

I hear their i-cy notes gli-ste



BRIDGE

ning.

Roots and hearts run

deep,_____

I



call to you,_____

you call to me._____

CHORUS



We can sound to-ge-ther,

grow in har-mo-ny,

liste-ning to each o-ther's



beats and me - lo - dies,

we're on this earth for - e - ver,



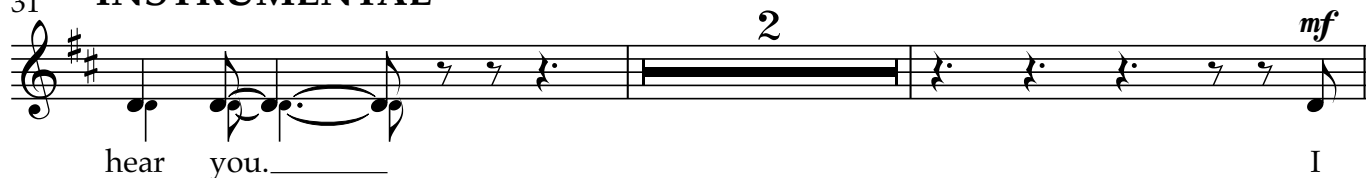
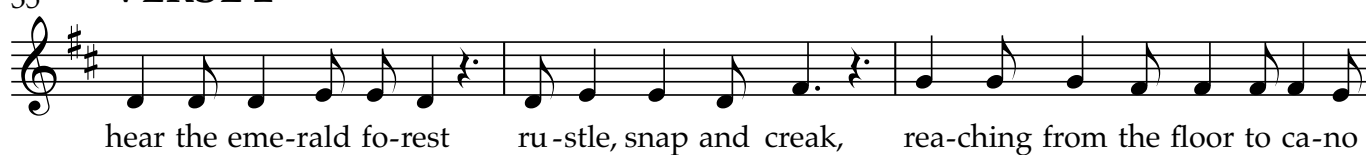
joined in sym - pho - ny,

I call to you,_____

2

Voice

28

31 **INSTRUMENTAL**35 **VERSE 2**

38



41

BRIDGE

44

cresc.**CHORUS**

47



50



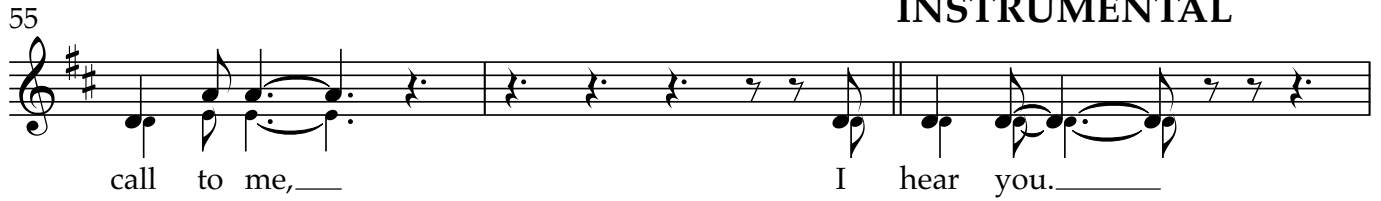
52



joined in sym-pho-ny, I call to you,—

INSTRUMENTAL

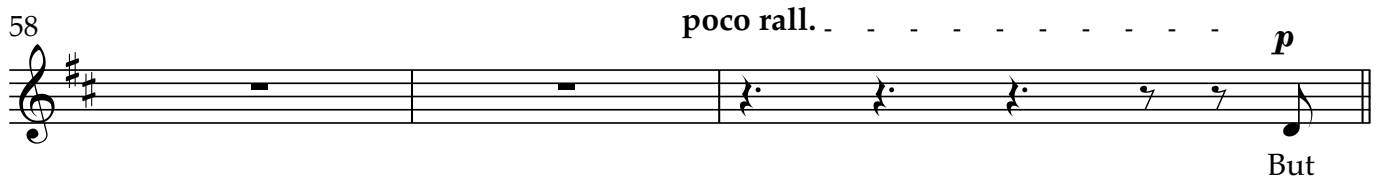
55



call to me,— I hear you.——

58

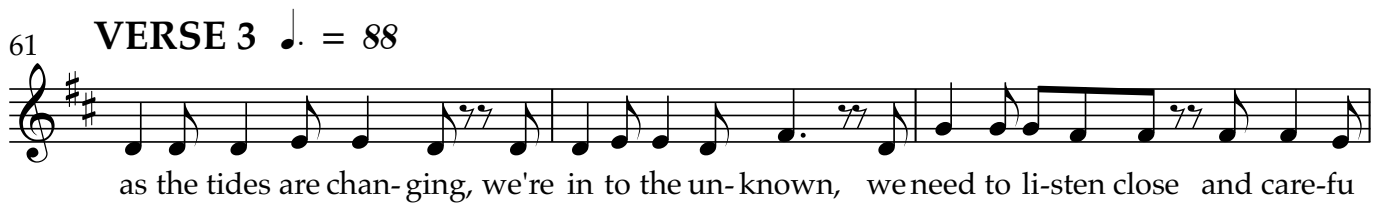
poco rall. *p*



But

61

VERSE 3 ♩. = 88



as the tides are chan-ging, we're in to the un-known, we need to li-sten close and care-fu

64

cresc. *poco accel.*



lly,— comesun-shine or rain clouds, how - e-ver hard the road, let's

CHORUS

♩. = 100 (a tempo)

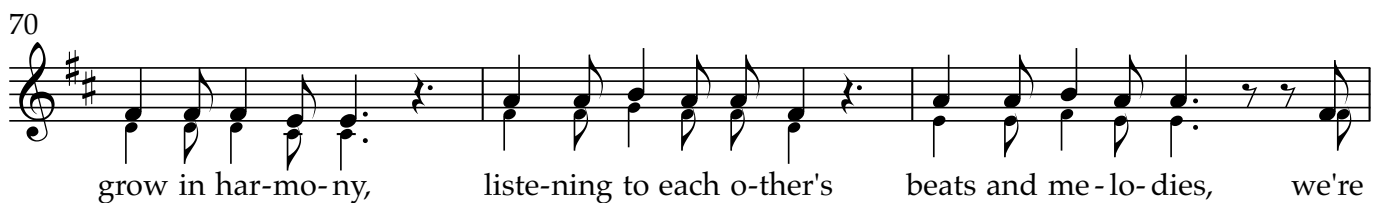
67

f



sing our fu-ture songs in sy-ner - gy!— We can sound to-ge-ther,

70



grow in har-mo-ny, liste-ning to each o-ther's beats and me-lo-dies, we're

73



on this earth for-e-ver, joined in sym-pho-ny, I call to you,—

4

Voice

76

CHORUS

79

The image shows a musical score for a song. The top staff is a vocal line in treble clef with a key signature of two sharps (F# and C#). It begins with a whole rest, followed by a half note G4, a half note A4, and a dotted half note B4. This is followed by a half note G4, a half note F#4, and a dotted half note E4. The line ends with a half note D4 and a whole note C4, all connected by a long slur. Below the staff are the lyrics: "Ahh, _____ ahh, _____ ahh, _____ ahh. _____". The bottom staff is a piano accompaniment in treble clef with the same key signature. It starts with a quarter note G4, a quarter note A4, a quarter note B4, and a quarter note G4. This is followed by a quarter note F#4, a quarter note E4, and a quarter note D4. The line ends with a quarter note C4 and a quarter rest. Below the staff are the lyrics: "We can sound to-ge-ther, grow in har-mo-ny, liste-ning to each o-ther's".

We can sound to-ge-ther, grow in har-mo-ny, liste-ning to each o-ther's

82

beats and me-lo-dies, we're on this earth for-e-ver, joined in sym-pho-ny, I

85

call to you, — you call to me, —

88

ff OUTRO

88

I hear you!

92

Musical score for 'I hear you.' in G major (one sharp). The melody is written on a treble clef staff. The lyrics 'I hear you.' are written below the staff. The score includes a repeat sign and a final measure with a fermata.